

HRI 1.5/1.9/2.6/3.9



CE Certified, lightweight, silent modules, manufactured to high tolerances to create super smooth hi-res displays.

MODULE SPECIFICATIONS - HRI 1.5/1.9/2.6/3.9

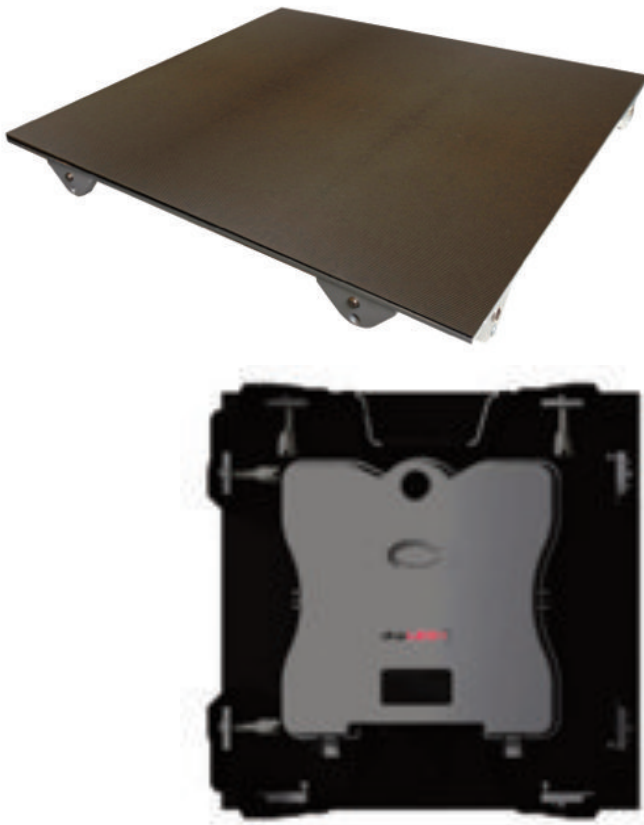
| | | HRI 1.5 | HRI 1.9 | HRI 2.6 | HRI 3.9 |
|-------------------------------------|-----------------------|-------------------------------|--------------------|--------------------|--------------------|
| LEDS | | | | | |
| LEDs Per Pixel | | | | 3 | |
| Red Wavelength (Dominant) | nm | | 620 | | |
| Green Wavelength (Dominant) | nm | | 520 | | |
| Blue Wavelength (Dominant) | nm | | 465 | | |
| PIXELS | | | | | |
| Pixel Configuration | | 3-in-1 SMD Black Body | | | |
| LEDs Per Area | LED/m ² | 1.3 million | 830,769 | 442,368 | 196,613 |
| Physical Pixel Pitch | mm | 1.5 | 1.9 | 2.6 | 3.9062 |
| Physical Pixel Resolution (Width) | pixels | 320 | 320 | 192 | 128 |
| Physical Pixel Resolution (Height) | pixels | 180 | 360 | 192 | 128 |
| Physical Pixel Resolution (Total) | pixels | 57,600 | 115,200 | 36,864 | 16,384 |
| Physical Pixels Per Area | pixels/m ² | 444,444 | 277,008 | 147,456 | 65,536 |
| MODULE | | | | | |
| Active Module Width | mm | 480 | 608 | 500 | 500 |
| Active Module Height | mm | 270 | 684 | 500 | 500 |
| Active Module Area | m ² | 0.1296 | 0.416 | 0.25 | 0.25 |
| Module Depth | mm | 95 | 80 | 80 | 96 |
| Module Weight | kg | 6 | 17 | 11 | ≤10.5 |
| LED Tile Width | mm | 240 | 304 | 250 | 250 |
| LED Tile Height | mm | 270 | 228 | 250 | 250 |
| Viewing Angle - Horizontal | degrees | 160 | 160 | 160 | 140 |
| Viewing Angle - Vertical | degrees | 160 | 160 | 160 | 120 |
| Ingress Protection (Front) | | IP54 | IP54 | IP54 | IP40 |
| Ingress Protection (Back) | | IP30 | IP30 | IP30 | IP40 |
| Cabinet Material and Surface Finish | | Aluminium | | | |
| Storage Temperature Range | degree C | -20 to +45 | -20 to +45 | -20 to +50 | -20 to +50 |
| Operating Temperature Range | degree C | 0 to +45 | 0 to +45 | 0 to +45 | 0 to +50 |
| Operating Humidity Range | % | 10 to 90 Non-condensing | | | |
| COLOUR | | | | | |
| Processing Depth | colours | 16bit | | | |
| Refresh Rate | Hz | 1,900 | | | |
| BRIGHTNESS | | | | | |
| Brightness (After Calibration) | nits | 2,000 | 2,000 | 2,000 | 1,200 |
| Brightness Control | | 256 Levels, Auto/Manual | | | |
| POWER | | | | | |
| Input Voltage | VAC | 100/250 | | | |
| Input Power (Average) | watts | 315/m ² | 223/m ² | 211/m ² | 240/m ² |
| Input Power (Maximum) | watts | 945/m ² | 670/m ² | 633/m ² | 720/m ² |
| OTHER | | | | | |
| Lifespan | hours | 100,000 | | | |
| Computer System Type | | PC Win7, Vista, XP, NT, Win98 | | | |
| Video Input | | DVI, HDMI | | | |
| Pixel Calibration | | Yes | | | |
| Certification | | CE, FCC, ETL | | | |

All specifications are correct at time of print, however they are liable to change and should be confirmed at point of order.



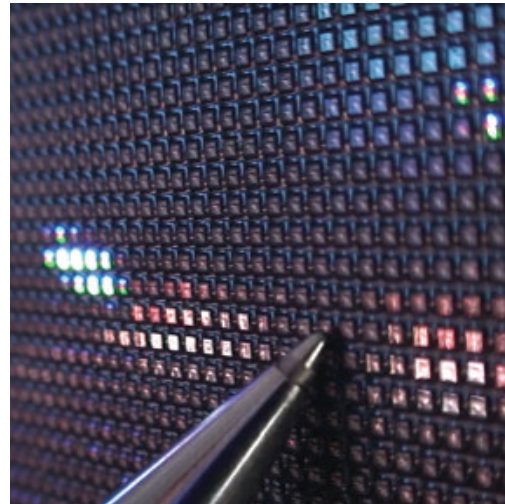
When you need the best

The digiLED HRi offers some of the tightest pixel pitches currently available in today's LED display market. These super h-res displays result in viewing distances being shortened to just 1 metre and an off angle performance of up to 170° (without colour shift). Couple that with digiLED's legendary image reproduction, featuring 16 bit greyscale, refresh rates above 2,000Hz and high contrast ratios and the HRi is the clear choice for applications where only the best will do.



All you need for high resolution display applications

- Super bright at up to 2,000 nits
- Low power consumption
- Minimal heat output
- Silent, fanless system
- Fully calibrated for true uniformity
- Ultra thin, lightweight module design
- High tolerances for seamless displays



Standard system accessories

- digiLED Navigator screen interface
- digiPRO & PRO HD processors
- digiAD content management system
- Installation structures

